

Brattleboro Development Credit Corporation Newsletter

Number Nineteen

Summer 2004

BDCC Celebrates 50 Years of Service

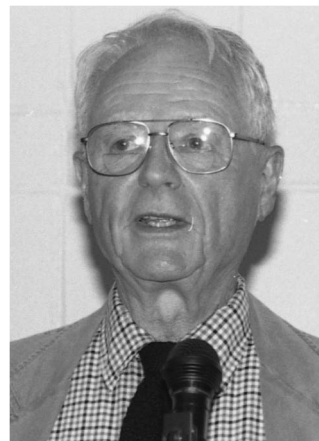
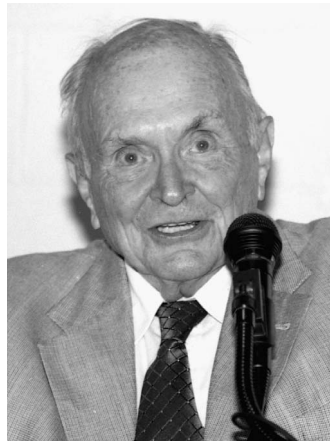
On June 24 BDCC celebrated its 50th anniversary with a gathering at the brand new Windham Regional Career Center. The afternoon event was attended by over 150 members of the community and included several state officials and luminaries from BDCC's past.

Visiting from Florida was BDCC's first executive Al Moulton. John Kristensen, a retired attorney who helped create BDCC back in 1954, spoke, as did Moulton.

Governor James Douglas greeted the attendees with remarks about BDCC's success. Former Brattleboro school administrator and former Vermont Commissioner of Education Ray McNulty, now with the Bill and Melinda Gates Foundation, also spoke.

Serenity Smith of Gemini Trapeze gave a demonstration of her gymnastic ability on the trapeze and the Vermont Jazz

continued on page 4



Clockwise from above left: Al Moulton, BDCC's first paid executive; BDCC founder John Kristensen; buffet table at the anniversary gathering; Trapeze Artist Serenity Smith of Gemini Trapeze, gave a performance.



INSIDE THIS EDITION...

- **Page 2:** BDCC Executive Director
- **Page 3:** SRI World Creates OneReport

BDCC Executive Committee

President, William Palumbo,
Kenyon Realty, 464-2101
sutton@sover.net

Vice President, Debbie Boyle, Chittenden
Bank, 258-4019
dboyle@chittenden.com

Treasurer, John Meyer, Peciak & Co.,
257-1307, jmeyer@sover.net

Kevin Meyer, Mary Meyer Corp.
365-7793
kevin_meyer@marymeyer.com

Phil Steckler, Country Business
Service, 254-4504 phschi@sover.net

Dart Everett, Everett Real Estate,
254-9258, deverett@sover.net

Bruce Gardner, Janos
Technology, 365-7714
Bgardner@JanosTech.com

Carl Lynde, BankNorth, Vermont
257-6519, clynde@banknorth.com

Mark Richards, Richards, Gates,
Hoffman & Clay, 254-6016
Mark.Richards@therichardsgroup.com

Hugh Barber, SVE Associates,
254-9318, hbarber@sveassoc.com

Peter Van Oot, Downs Rachlin Martin
PLLC 258-3070 pvanoot@drm.com

The BDCC Newsletter

Kurt Isaacson, *Executive Director,*
BDCC@sover.net www.brat-
tleborodevelopment.com

Sandy Otero, *Administrative
Assistant*

Art Edelstein, *Newsletter Editor*
artedel@sover.net

Company News

Do you have news of interest to the Brattleboro business community? Has your company expanded, introduced a new product, won an award?

Send your information to:

Newsletter Editor
Brattleboro Development
Credit Corp.
76 Cotton Mill Hill
Brattleboro, VT 05301

Fax it to us at 257-0294 or
e-mail us at BDCC@sover.net

From the Executive Director

I want to take this opportunity to say how pleased and proud we at BDCC are of all those who helped organize the June 24 celebration at the Windham Regional Career Center. It was a terrific event! Special thanks goes to Dart Everett for his organizational skills. Roger Miller deserves much credit for his role in producing the special print publication highlighting our 50 years of accomplishments. Ed Bouquillon of the Windham Regional Career Center was extremely helpful in organizing the event venue.

We are thankful to our speakers that day, and to all the community members who attended. I feel they gained a greater sense of the history of BDCC and got a taste for what the future holds.

We continue to gain new tenants at the Cotton Mill. Recently we leased space to Laurie Klenkel of Crème de La Crème Patisserie. Her husband has also leased space for Preservation Plastering Inc., which replicates historical moldings. Also new are Jeff Baird Photography, West Upholstery, and Barbara Bragg a multi-media artist. We are currently at 83 percent occupancy.

Elsewhere, we have leased 10,000 square feet of warehouse space at the Bookpress to Chelsea Green Publishing of White River Junction. Habitat for Humanity has also leased Bookpress space that will be used for inside construction of modular homes with prospective owner input. Habitat now has the ability to build more homes. BDCC has structured the lease to help defer costs for this non-profit organization.



I began my second year at BDCC this month. My first year has been both exciting and fun. We will continue to recruit new businesses and help existing businesses to expand and thrive. Our goal is to fill unused commercial space at the SCA Tissue and Northeast

Cooperatives buildings.

We are exploring what role BDCC can have in creating a greater stock of housing in the region so it is easier for business to relocate and expand in this area. We are working in conjunction with the Windham Regional Commission and the Brattleboro Area Land Trust in this venture.

Overall, the regional economy continues to show signs of improvement with unemployment declining to 3.1 percent in May. Many businesses are in an expansion mode. The regional infrastructure, especially in Brattleboro, continues to improve and it is easier for traffic to flow and for parking.

Finally, we will continue to collaborate with the Chamber, BABB, the Windham Regional Commission and the Arts community as we move towards a creative economy. We're very excited about the Andy Warhol exhibit coming to the Brattleboro Museum and Arts Center in September. It will highlight the region's artistic strength.

SRI World Creates OneReport

If your company is suffering from “survey fatigue” SRI World can help. The web based social investing reporting company has developed a new product, OneReport. It promises to cut the mounds of paperwork involved in social reporting down to a very manageable size.

SRI World, located on the second floor of the Cotton Mill, is the brainchild of Jay Falk. Falk took his experience in social investing (the application of social and environmental criteria to traditional financial analysis) and created his company in 1998. At that time it was called Socialfunds.com a purely web based business.

“It’s a personal finance site devoted to social investing,” he explained. The site has 10,000 pages of information, news, and data on a variety of information pertinent to social investing.

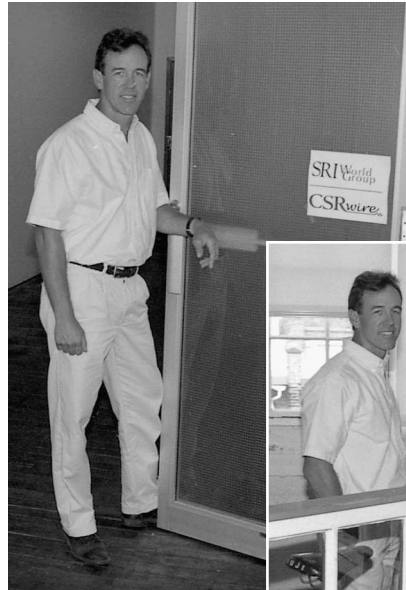
Falk, 46, a Williamsville resident, first housed his company in his garage until it grew too big. He moved to his present location in 2000 and today, the six employees have high ceilings and a sunny office space to work in.

Social investors invest about \$2 trillion, said Falk. The vast majority are institutional investors.

Falk also created CSRWire, a news service for corporations, but sold a controlling interest in that business to Meadow Brook Lane of Springfield, MA.

According to Falk, his newest product, OneReport, came about when he learned from business executives of survey fatigue. This is best described as too many surveys and a lack of coherent ability to manage the data.

In April he launched OneReport. His company partners with 22 research



Left: SRI World Founder Jay Falk. Below: Jay Falk (left) president of SRI World with Bahman Mahdavi webmaster (center) and Bara MacNeill CSRwire client services manager (right).



firms and data users researching 5,000 companies in 22 countries primarily in Europe and North America.

OneReport consolidates all data requests, provides data management tools to each company and sends data back to each data user. The big plus for companies is that they only answer questions once.

“This new global electronic reporting network,” said Falk, “enables companies to more efficiently report their social, environmental, economic and corporate governance information to investors, the financial community and other stakeholders.” Over 50 multi-national companies from around the world, including 22 Fortune 100 companies, participated in the development of OneReport.

OneReport makes its money by charging a sliding scale fee to each

company for its service. Among its customers are Dupont, World Dutch Shell, Johnson & Johnson and Alcan.

Falk said his company found an important niche business. “We’re the first to market this,” he said.

In addition to reporting to research firms, said Falk, “OneReport can also be used to create reports based on the Global Reporting Initiative (GRI) guidelines. The tools featured in OneReport help companies understand the scope of GRI reporting and identify data that can be included in their GRI report.”

Falk said he is very optimistic about OneReport. “It’s our main product.”

OneReport should do well in the

continued on page 4

BDCC's 50th Anniversary

continued from page 1

Center provided a musical background. Students at the career center catered the buffet.

The event was an opportunity for many of the Cotton Mill tenants to exhibit their products. Among those attending were artist Naomi Lindsey, photographer Sara Levine, Michael

Billingsley of Straight Arrow Recording, Laurie Klenkel of Crème de la Crème Patisserie, Rory Brennan of Preservation Plastering and Kelt Naylor of Side hill Farms. Also showing products were Pro Lingua a language textbook distributor, Natalie Blake Pottery Studio, and Istanbul Kitchen with Turkish foods.

SRI World

continued from page 3

Cotton Mill, according to Falk. He calls the mill, "very affordable space and a great space to grow in."

Visit OneReport on the web www.one-report.com).

SRI World Group is the parent company of CSRwire (CSRwire.com), a global newswire service for corporate responsibility press releases. The company is also the publisher of SocialFunds.com, the Web's largest personal finance site devoted to socially responsible investing and InstitutionalShare-owner.com, a social investment news and resource center for institutional investors.

*Front of
Windham
Regional
Career Center
building.*



Presorted
Standard
U.S. Postage
PAID
Brattleboro, VT
Permit #39

**Brattleboro Development
Credit Corporation**
76 Cotton Mill Hill
Brattleboro, VT 05301
Phone: (802) 257-7731
Fax: (802) 257-0294
www.brattleborodevelopment.com
bdcc@sover.net